

The background of the slide features a close-up, low-angle shot of several ornate, golden-colored lighthouse lanterns. The lanterns have intricate, filigree-like patterns and pointed, flame-like tops. They are arranged in a row, with the central ones being more prominent. The lighting is dramatic, highlighting the metallic texture and the complex designs of the lanterns against a dark, out-of-focus background.

19th IALA Conference 2018

World Lighthouse Heritage Exhibition

March, 2017

Hosted by



Ministry of Oceans
and Fisheries

Organized by



IALA

1. Exhibition Overview

- Title : World Lighthouse Heritage Exhibition
- Date : May 28 (Mon) - June 1 (Fri), 2018
- Venue : Songdo ConvensiA, Incheon, Republic of Korea
- Participants : IALA Members and Public

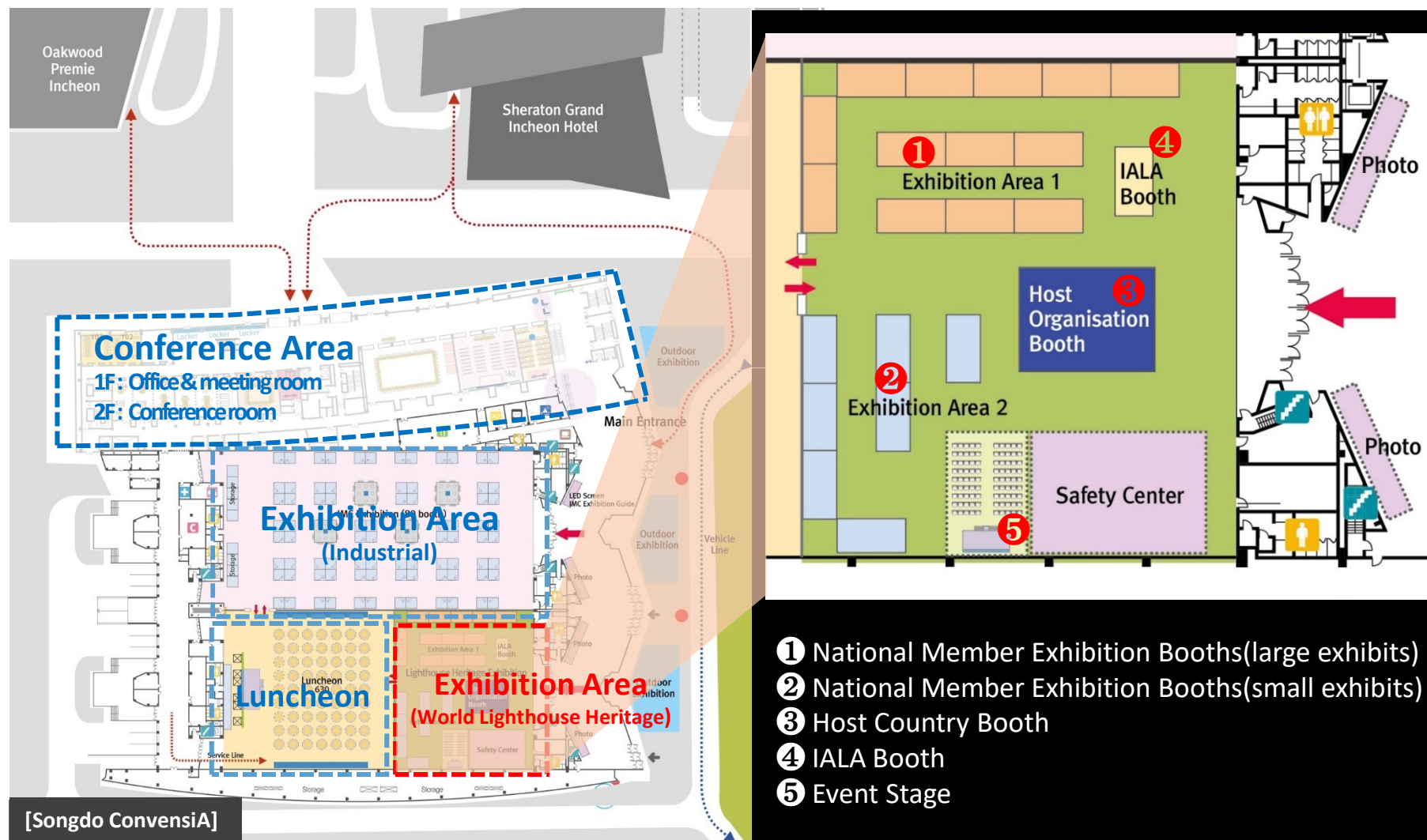


[National Lighthouse Museum]

2. Exhibition Layout



19th IALA Conference 2018
Incheon, Republic of Korea



3. Exhibition Programme

- **National Member Exhibition Booths(large exhibits)**
 - Large exhibits with well-fitted stands and explanation by lighthouse heritage experts
- **National Member Exhibition Booths(small exhibits)**
 - Small exhibits(e.g. photographs, videos, documents, books, artefacts etc.)
- **Host Country Booth**
 - Collection of lanterns, rotating beacons and lens
 - Collection of lighthouse stamps and coins from around the world
 - Changes of light sources
- **IALA Booth**
 - Introduction of IALA's heritage aims, work and IALA ENG TG4
- **Event Stage**
 - Public lectures, presentations, talk concerts etc.



3. Exhibition Programme



19th IALA Conference 2018
Incheon, Republic of Korea

National Member Exhibition Booths(large exhibits)

Large exhibits with well-fitted stands



National Member Exhibition Booths(small exhibits)

photographs, videos, documents, books, artefacts etc.



Host Country Booth

Collection of lanterns, lens and lighthouse stamps and coins



IALA Booth

Introduction of IALA's heritage aims, work and IALA ENG TG4

4. Host Country Booth



19th IALA Conference 2018
Incheon, Republic of Korea

Fresnel Lens Exhibition



[3rd Order]



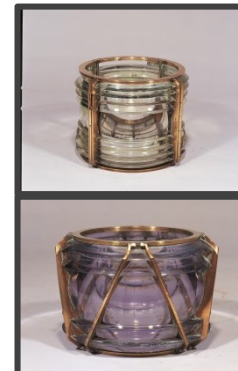
[4th Order]



[5th Order]



[6th Order]



[Lens]

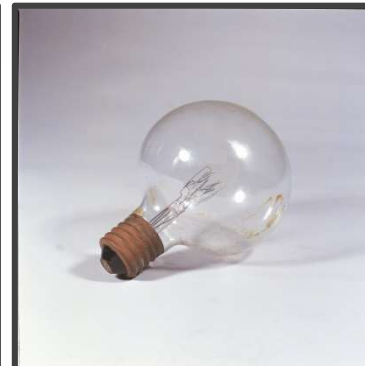
History of Light Source



[Oil Lamp]



[Gaslight]



[Light Bulb]



[LED]

4. Host Country Booth



19th IALA Conference 2018
Incheon, Republic of Korea

Lighthouse Photography Exhibition



[e.g. Photography Exhibition]

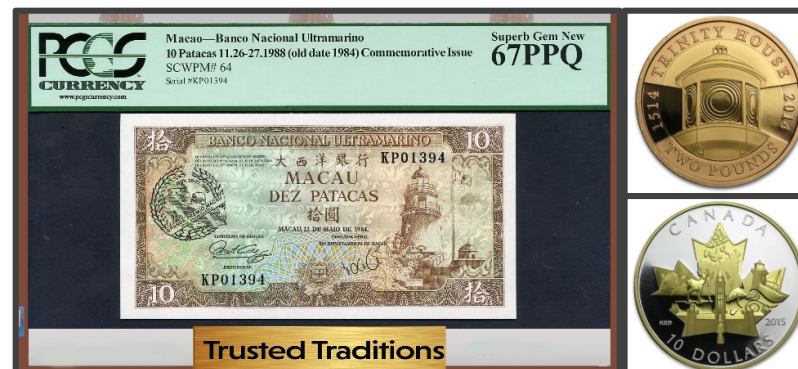


[e.g. Lighthouse Photography]

Stamp & Coin Exhibition



[Lighthouse Stamp]



[bill & coin]

5. Proposed Time Frame



19th IALA Conference 2018
Incheon, Republic of Korea

Activity	'16	'17												'18					
	12	1	2	3	4	5	6	7	8	9	10	11	12	1	2	3	4	5	6
1 st Exhibition Application Form distributed to all national members																			
Consultation between IALA(TG4) and host organization																			
1 st Exhibition Committee (IALA ENG6)																			
2 nd Exhibition Application Form distributed to all national members																			
IALA Council 64																			
2 nd Exhibition Committee (IALA ENG7)																			
IALA Council 65																			
3 rd Exhibition Application Form distributed to all national members																			
3 rd Exhibition Committee (Provisional)																			
Exhibits Collection																			
Preparation for Exhibition																			
Lighthouse Heritage Exhibition																			

6. Benefits for the Participation in the Exhibition



19th IALA Conference 2018
Incheon, Republic of Korea

- Well-fitted stands to exhibits displayed in Exhibition 1&2
- Glass covers and retractable belt posts
- Assistant staff in place during the whole period of exhibition
“Free of charge”



Glass covers (Left: Large / Right : Small)



[National Lighthouse Museum]

7. Exhibition Application Form



19th IALA Conference 2018
Incheon, Republic of Korea



Invitation Letter

Subject: The World Lighthouse Heritage Exhibition in conjunction with the 19th IALA Conference

Dear National member,

IALA, associated with the Republic of Korea as the 19th IALA Conference Host in 2018, proposes that a world lighthouse heritage exhibition be held in the Conference to allow awareness of the lighthouse heritage to spread further to reach a wider audience with easier access to the Conference.

Whether aimed at the Conference participants or general public, a world lighthouse heritage exhibition will provide information that allows audience to educate themselves and others about lighthouse. IALA and the Republic of Korea are very excited to share a wealth of lighthouse knowledge. Many subjects will feature detailed knowledge to help better understand lighthouse and how they have worked.

This Heritage exhibition will be one of the most notable events, showcasing a wide-ranging display items concerned with lighthouse from all over the world. Well-fitted stands to exhibits displayed in the exhibition will be provided free of charge by the host organization for the World Lighthouse Heritage Exhibition. Glass covers and retractable belt posts will be also provided to keep exhibits safe. In addition, host organization will supply with assistant staff free of charge for the period of exhibition.

We would be grateful if you could submit, at the earliest possible time, your application to participate in the proposed lighthouse exhibition. Please e-mail your application to contact@iala2018korea.org or provide background information, as well as an application for the 19th IALA Conference and in the World Lighthouse Heritage Exhibition.

Youngshin KIM
Director
Ministry of Oceans and Fisheries
Navigation and Lighthouse Authority

Francis ZACHARIAE
Director
Ministry of Oceans and Fisheries
Navigation and Lighthouse Authority


Contact Point

19th IALA Conference Secretariat
E-mail : contact@iala2018korea.org
Phone : +82 (0)2 2627 8309
Fax : +82 (0)2 2627 8315
www.iala2018korea.org



Application Form

Ministry of Oceans and Fisheries
Government complex Sejong 94
Dasom 2-Ro, Sejong City 30110
Republic of Korea
www.mof.go.kr

 **19th IALA Conference 2018**
Incheon, Republic of Korea

IALA
10 rue des Gaudines, 78100
Saint Germain en Laye
France
www.iala-ism.org

WORLD LIGHTHOUSE HERITAGE EXHIBITION APPLICATION

You are kindly requested to complete this form and submit it by email (contact@iala2018korea.org) or Fax (+82 44 200 5889) by March 31(Fri), 2017.

1. DESCRIPTION OF ORGANIZATION

Organization Name			
Organization Name*			
Address			
City (Postal/Zip code)	Country		
Contact Person	Position/Title		
Phone	Fax		
Mobile	E-mail**		

* Mentioned on the conference website and in the final programme.
** Mandatory - All related information will be sent by email; moreover, the 19th IALA Conference Secretariat will use the e-mail address to advance consultation with the organization applied for this exhibition programme.

2. EXHIBITION AREA (please check your preferred exhibition area)

☐ Exhibition Area 1 ☐ Exhibition Area 2

3. EXHIBITION ITEMS

Items	1.	
	2.	
	3.	
	4.	
	5.	

4. DIMENSION OF ITEMS

Item No.	Length	Height	Depth	Measurement
Item 1				<input type="checkbox"/> m <input type="checkbox"/> cm
Item 2				<input type="checkbox"/> m <input type="checkbox"/> cm
Item 3				<input type="checkbox"/> m <input type="checkbox"/> cm
Item 4				<input type="checkbox"/> m <input type="checkbox"/> cm
Item 5				<input type="checkbox"/> m <input type="checkbox"/> cm

5. DESCRIBE ITEMS (If you attach photos of actual items, it would be of great help for us to understand)

We, the undersigned, hereby make an application for the Heritage Exhibition at the 19th IALA Conference.

Date _____ Signature _____

19th IALA Conference Secretariat
General Inquiry: contact@iala2018korea.org, Phone: +82 (0)2 2627 8309, Fax: +82 (0)2 2627 8315,
Website: www.iala2018korea.org

A nighttime photograph of a city skyline, likely Incheon, Korea. The image features several tall, modern skyscrapers with illuminated facades. The central focus is a large, dark building with a prominent, glowing blue geometric pattern on its facade. To the right, another tall building is lit up with blue lights. The foreground shows a busy street with yellow light trails from cars and a large, modern building with a curved roof. A river or canal flows through the lower right portion of the image. The sky is dark blue.

Thank you!
See you next year in Incheon, Korea